

OPERATION SOTERIA

Positive diagnosis guidance

Approved

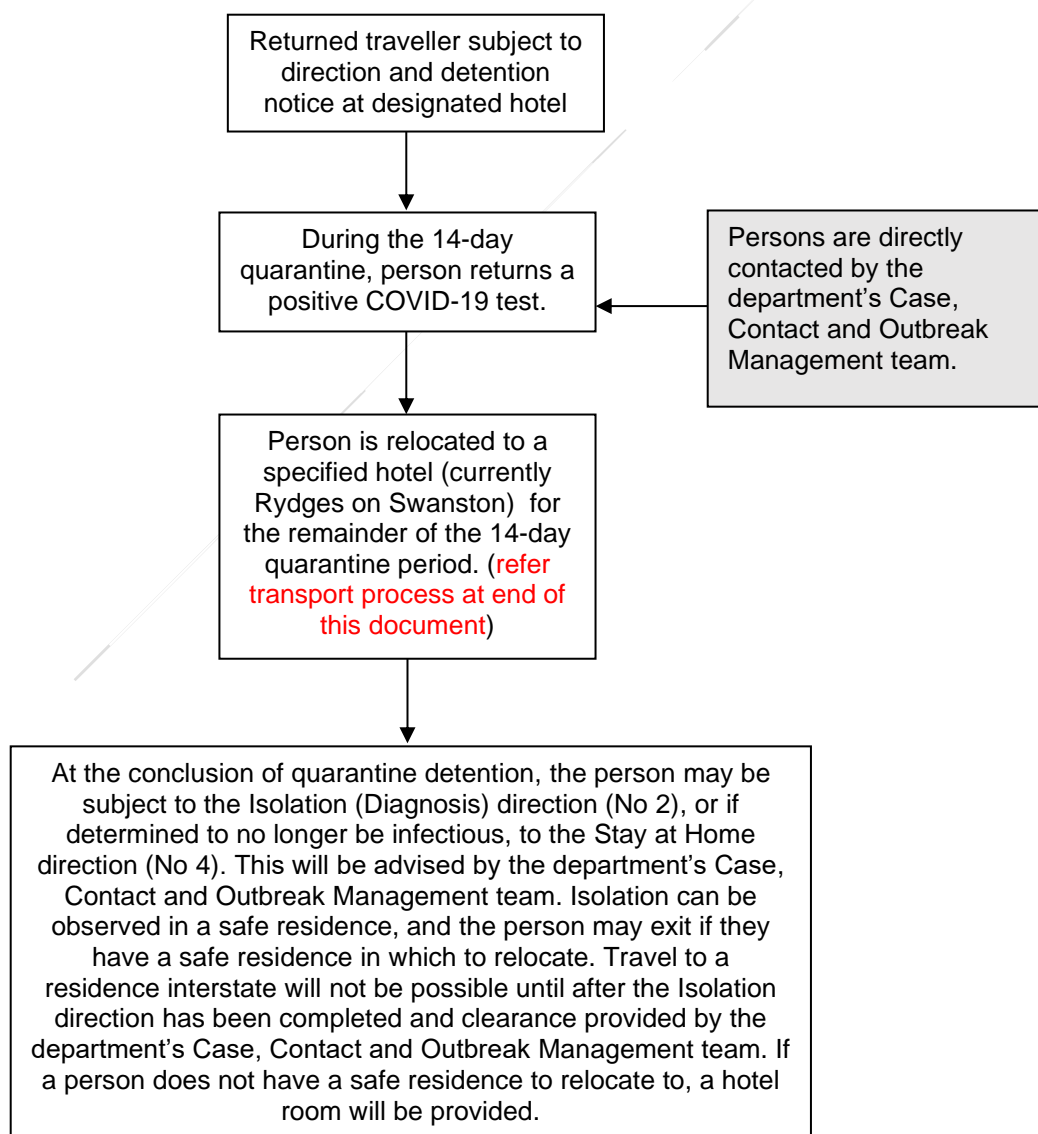
Date: 27 Apr 20 By: P Williams (Accom Comd) Consultation: TBA

Positive Diagnosis during Quarantine

Solo Traveller

Returned travellers are subject to a direction and detention notice in accordance with section 200(i)(a) of the Public Health and Wellbeing Act 2008 (Vic) (the **Act**).

This guidance applies to travellers whom receive a confirmed positive diagnosis of COVID-19 during the 14-day detention period.

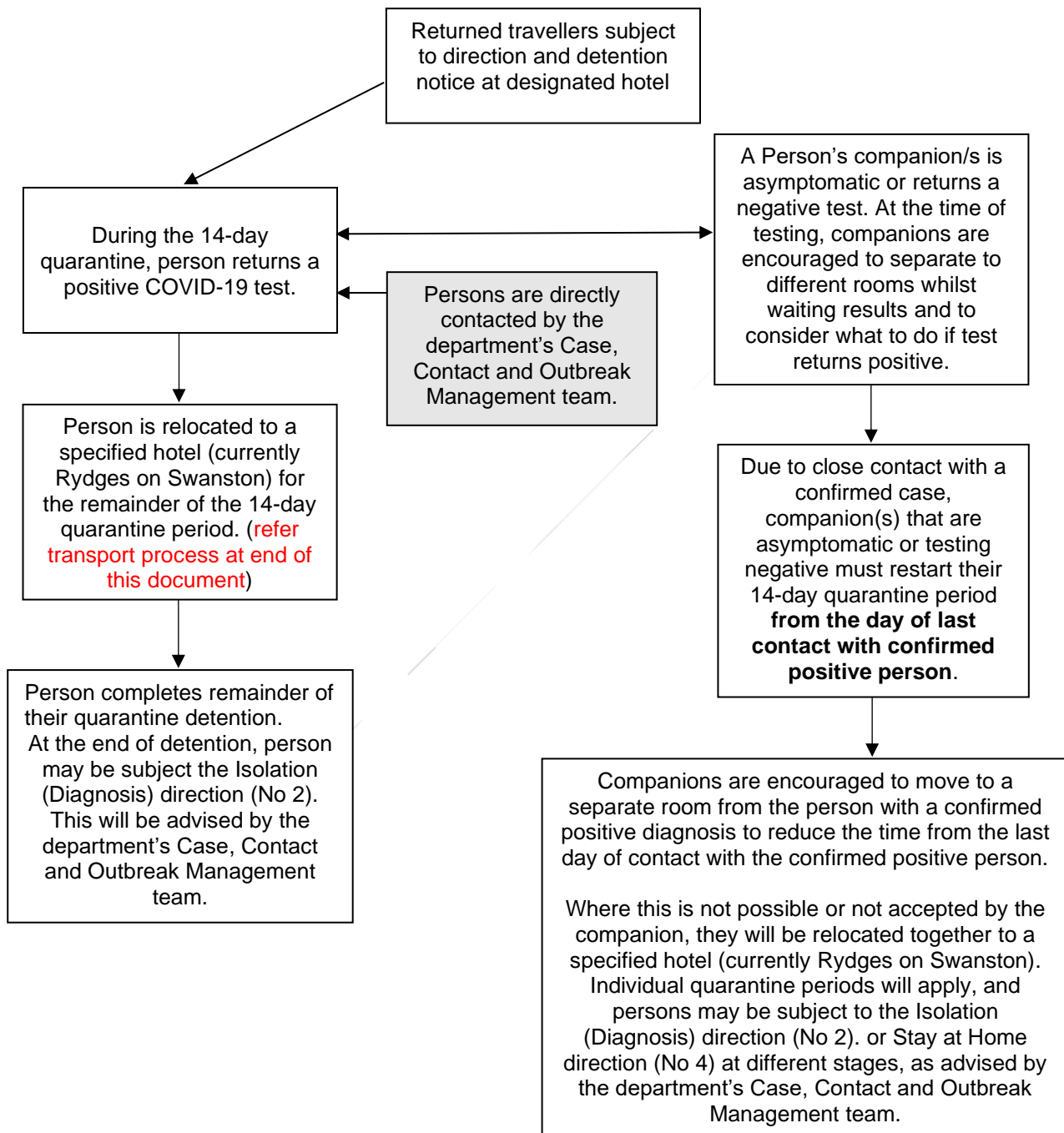


Positive diagnosis during quarantine

Quarantined with others

Returned travellers are subject to a direction and detention notice in accordance with section 200(i)(a) of the Public Health and Wellbeing Act 2008 (Vic) (the **Act**).

This guidance applies to travellers who receive a confirmed positive diagnosis of COVID-19 during the 14-day detention period whilst sharing quarantine with others.



DHHS team leaders should advise the DHHSOpSoteria@dhhs.vic.gov.au via email whenever a person or persons are required to relocate to a specified hotel (currently Rydges on Swanston).

Providing hotel accommodation for persons in quarantine subject to the Isolation (Diagnosis) Direction (No 2)

- Persons who do not have a place to safely observe the Isolation (Diagnosis) Direction (No 2) will have a hotel room provided to them.
- All persons requiring a hotel room are to observe the Isolation (Diagnosis) Direction (No 2) and are to be transferred to a specified hotel (currently Rydges on Swanston).
- Whilst subject to an Isolation (Diagnosis) Direction (No 2), the person:
 - Must reside in the premises (hotel room) until clearance from isolation (self-isolation) is given
 - Must not leave the premises (hotel room) except:
 - For the purposes of obtaining medical care or medical supplies (eg travel directly to and from hospital)
 - Any other emergency situation (for example in the event of fire or evacuation)
 - For the purposes of exercise, but only if it is possible for the person to
 - Avoid close contact with any other person
 - Not enter any other building
 - If required to do so by law.
 - If leaving the premises for any of the above reasons, the person must at all times wear a mask.

Clearance from isolation (self-isolation)

Clearance from isolation is provided by the Case, Contact and Outbreak Management team from the Department of Health and Human Services. A letter of clearance will be provided to the person in self-isolation.

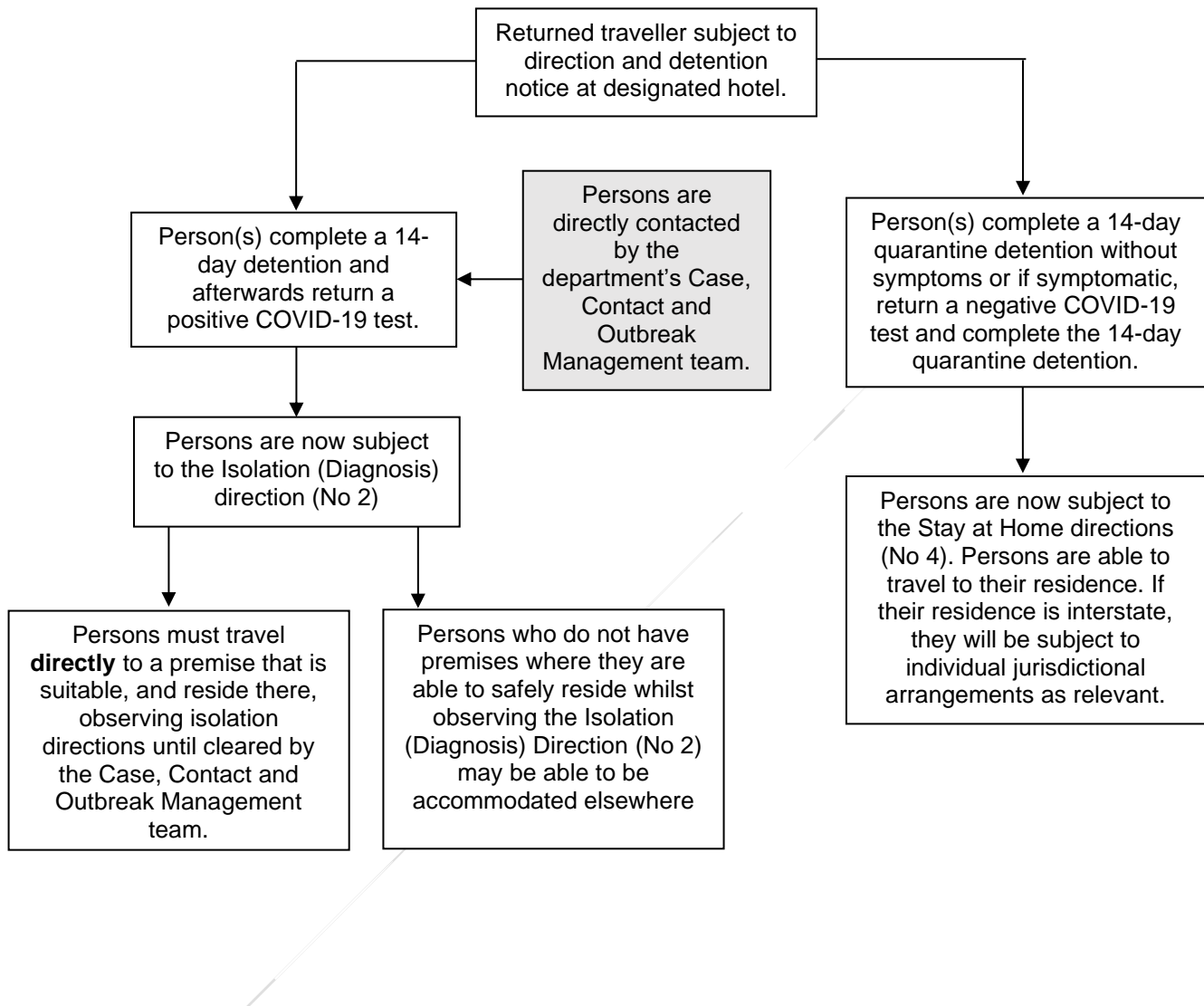
Additional

- Travellers from interstate who are unable to travel due to a positive diagnosis and individual jurisdictional requirements may either identify premises to reside in that are suitable for isolation (self-isolation) or access a suitable residence provided to observe the Isolation (Diagnosis) Direction (No 2) subject to the same conditions as above.
- Companions who have returned a negative COVID-19 test, but who have been detained in close proximity with someone who has returned a positive COVID-19 test are recommended (but not required) to follow the Isolation (Diagnosis) Direction (No 2). They are considered to be 'close contacts' of confirmed positive persons. They may elect to stay in the same room with the confirmed positive person in the specified hotel (currently Rydges on Swanston) and follow Isolation (Diagnosis) Direction (No 2) due to associated risks. However:
 - The risks of sharing a room and continued close contact with a confirmed positive person will be explained to the close contact by the department's Case, Contact and Outbreak Management team.
 - The 14-day Isolation (Diagnosis) Direction (No 2) period for the close contact will start from the day of last contact with the confirmed positive person while they are considered infectious.
 - Therefore, if the close contact stays in the same room with the confirmed positive person in the specified hotel (currently Rydges on Swanston), their 14-day Isolation (Diagnosis) Direction (No 2) period will start when the companion meets the criteria for release from isolation.

Positive diagnosis post detention

Returned travellers are subject to a direction and detention notice in accordance with section 200(i)(a) of the Public Health and Wellbeing Act 2008 (Vic) (the **Act**).

This guidance applies to persons who receive a confirmed positive diagnosis of COVID-19 after they have completed the detention period.



Transporting confirmed COVID-19 cases to the specified hotel (currently Rydges on Swanston)

- Transfer should be by Maxi taxi to support social distancing measures. The person should sit in the rear seat.
- Persons should wear PPE (masks and gloves) and be provided with wipes and/or sanitiser (provided by the exiting hotel).
- The taxi should be advised of transfer requirements prior to pick up to ensure adequate hygiene measures.
- The taxi driver should arrive with appropriate PPE (mask and gloves). If the driver does not arrive with PPE, the exiting hotel should provide mask and gloves to the driver for the journey.
- The DHHS team leader of the exiting hotel site should advise the DHHS team leader at the specified hotel (currently Rydges on Swanston) at time of departure, to ensure that a nurse and security guard (wearing appropriate PPE) are able to meet the taxi on arrival.
- The DHHS team leader of the exiting hotel should email DHHSOpSoteria@dhhs.vic.gov.au detailing the relocation.
- On arrival at the specified hotel (currently Rydges on Swanston), the person/s will be escorted to a new room by a security guard and nurse and provided with hotel information.
- Taxis will be required to properly clean their vehicle after transport, observing infection control measures (as informed by the CPVV and DHHS).